

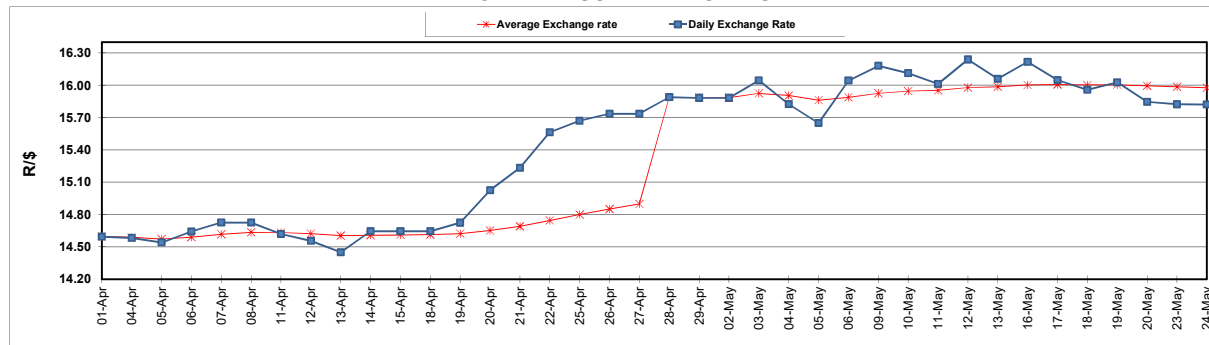
	PETROL 95 ULP	PETROL 93 ULP & LRP	DIESEL 0.05%	DIESEL 0.005%	ILL. PAR.
GAUTENG PUMP PRICE (SA c/l) AS FROM 04/05/2022	2,184.000	2,151.000	-	-	-
WHOLESALE PRICE (SA c/l) AS FROM 04/05/2022	-	-	2,199.440	2,215.840	1,664.288
SINGLE NATIONAL MAXIMUM RETAIL PRICE	-	-	-	-	2,194.000
BASIC FUEL PRICE - 24/05/2022 (SA c/l)	1,521.806	1,467.333	1,509.548	1,523.227	1,513.800
PRESS RELEASE CONTRIBUTION TO BFP 04/05/2022 - 24/05/2022 (SA c/l)	1,264.410	1,241.410	1,497.630	1,514.030	1,446.128
UNIT OVER/(UNDER) RECOVERY - 24/05/2022 (SA c/l)	(257.396)	(225.923)	(11.918)	(9.197)	(67.672)
AVERAGE BASIC FUEL PRICE 28/04/2022 - 24/05/2022	1,504.054	1,471.645	1,594.756	1,609.413	1,590.350
AVERAGE UNIT OVER/(UNDER) RECOVERY 28/04/2022 - 24/05/2022	(236.634)	(227.224)	(117.126)	(114.120)	(161.695)

ANALYSIS MOVEMENT OF AVERAGE OVER/(UNDER) RECOVERY

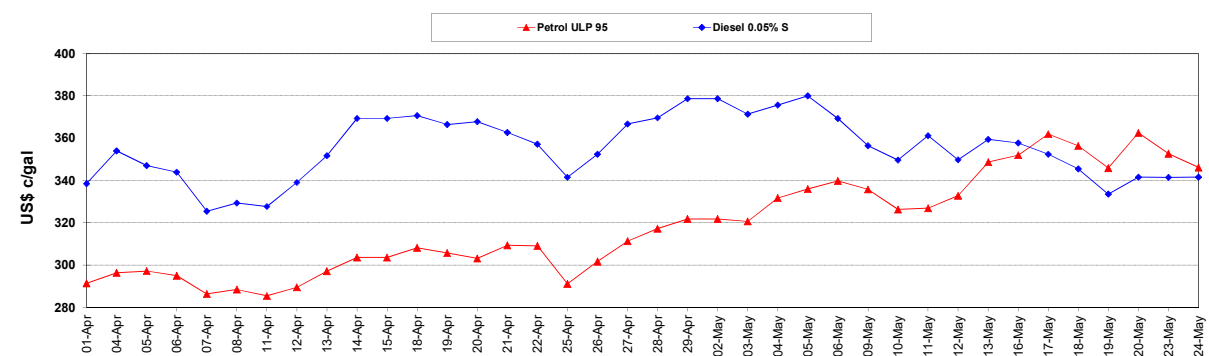
	PETROL 95	PETROL 93	DIESEL 0.05%	DIESEL 0.005%	ILL. PAR.
- MOVEMENT IN INTERNATIONAL PRODUCT PRICES	(135.112)	(127.890)	(9.483)	(5.487)	(54.350)
- MOVEMENT IN EXCHANGE RATE	(101.521)	(99.334)	(107.643)	(108.633)	(107.346)
AVERAGE UNIT OVER/(UNDER) RECOVERY 28/04/2022 - 24/05/2022	(236.634)	(227.224)	(117.126)	(114.120)	(161.695)

R/\$ EXCHANGE RATE - (R/\$15.8210 - 24/05/2022)

EXCHANGE RATE USED IN BASIC FUEL PRICE



INTERNATIONAL PRODUCT PRICES OF BASKET USED IN BASIC FUEL PRICE



BASIC FUEL PRICE IN SA CENTS PER LITRE

